

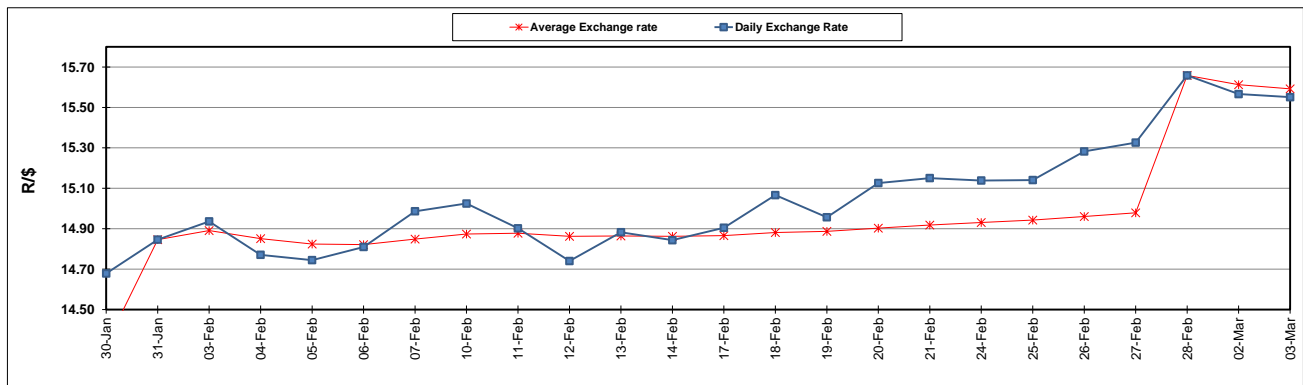
	PETROL 95 ULP	PETROL 93 ULP & LRP	DIESEL 0.05%	DIESEL 0.005%	ILL. PAR.
GAUTENG PUMP PRICE (SA c/l) AS FROM 04/03/2020	1,584.000	1,552.000	-	-	-
WHOLESALE PRICE (SA c/l) AS FROM 04/03/2020	-	-	1,403.260	1,408.660	856.728
SINGLE NATIONAL MAXIMUM RETAIL PRICE	-	-	-	-	1,085.000
BASIC FUEL PRICE - 03/03/2020 (SA c/l)	627.273	614.899	651.978	656.422	628.617
PRESS RELEASE CONTRIBUTION TO BFP 28/02/2020 - 03/03/2020 (SA c/l)	686.970	664.970	737.630	743.030	734.128
UNIT OVER/(UNDER) RECOVERY - 28/02/2020 (SA c/l)	59.697	50.071	85.652	86.608	105.511
AVERAGE BASIC FUEL PRICE 28/02/2020 - 03/03/2020	618.462	606.129	644.821	649.072	624.718
AVERAGE UNIT OVER/(UNDER) RECOVERY 28/02/2020 - 03/03/2020	68.508	58.841	92.809	93.958	109.410

ANALYSIS MOVEMENT OF AVERAGE OVER/(UNDER) RECOVERY

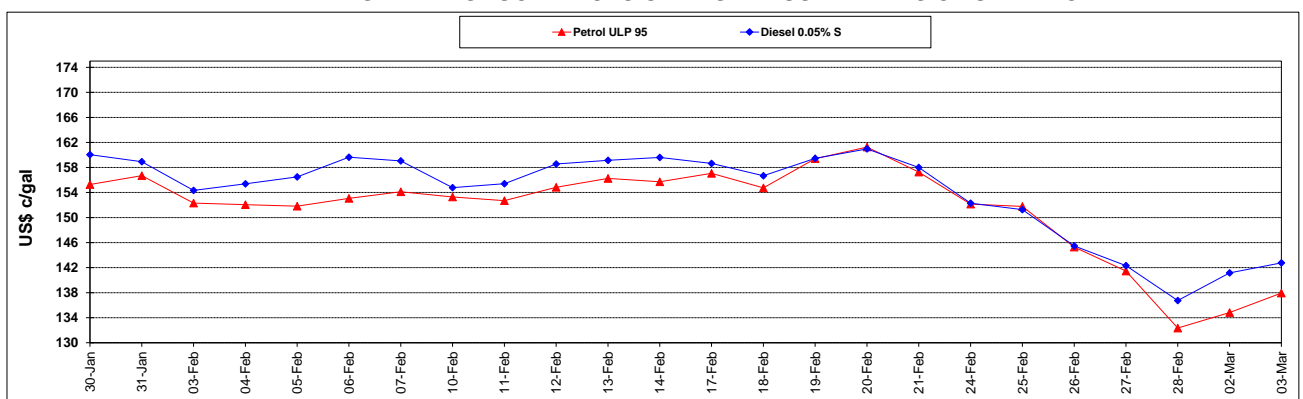
	PETROL 95	PETROL 93	DIESEL 0.05%	DIESEL 0.005%	ILL. PAR.
- MOVEMENT IN INTERNATIONAL PRODUCT PRICES	92.827	82.675	118.164	119.480	133.975
- MOVEMENT IN EXCHANGE RATE	(24.319)	(23.834)	(25.355)	(25.522)	(24.565)
AVERAGE UNIT OVER/(UNDER) RECOVERY 28/02/2020 - 03/03/2020	68.508	58.841	92.809	93.958	109.410

R/\$ EXCHANGE RATE - (R/\$ 15.5509 - 03/03/2020)

EXCHANGE RATE USED IN BASIC FUEL PRICE



INTERNATIONAL PRODUCT PRICES OF BASKET USED IN BASIC FUEL PRICE



BASIC FUEL PRICE IN SA CENTS PER LITRE

